

CUT LINE

ZA-1287

UCN Kit Components

1. Closure Cover
2. Cover Gasket
3. Clamping Bars
4. End Caps (2-Piece)
5. O-Rings
6. Tube Supports (Supplied with UCN 8-24, 8-30, 10-20, 10-30, and 10-40 only.)
7. Sealing Tape
8. Connecting Bars
9. Sealing Paste
10. Cable Measuring Tape
11. Grounding Wires
12. Cleaning Cloths
13. End Cap Installation Gauge
14. Vented Grounding Plug
15. Solid Grounding Plug
16. Solid Plug
17. Lubricating Paste
18. Brush



Universal Closures (UCN)



Photo
SEH123

Features / Benefits

- No special tools required for opening and closing
- Closure easily sealed and re-entered
- Excellent protection of cable splices
- Ideal for outdoor applications where underground, aerial, or direct-buried installations are required

Applications

- Copper cable installations
- Suitable for pressurized and non-pressurized systems
- Can be used in underground, aerial, or direct-buried applications

Description

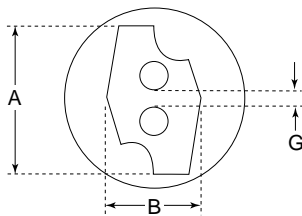
Corning Cable Systems offers a full line of UCN copper splice closures engineered to provide excellent environmental protection of twisted pair splices. These durable closures are suitable for either “butt” or “through” cable entry configurations. UCN closures can be used in underground, aerial, or direct-buried splice applications, and can accommodate up to 6000 pairs, depending on the product selected.

Ordering Information

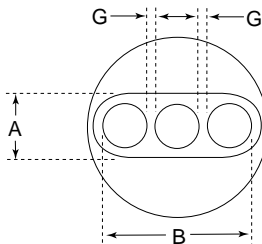
Universal Closures

Part Number	Inside Diameter in (mm)	Outside Diameter in (mm)	Maximum Sheath Opening Inside Notch in (mm)	Distance Between Inside of End Caps Outside Notch in (mm)	Overall Length in (mm)
UCN 5-20	4.57 (116.07)	5.91 (150.11)	20.00 (508.00)	22.91 (581.91)	30.24 (768.09)
UCN 6-10	6.54 (166.11)	7.80 (198.12)	11.00 (279.40)	13.91 (353.31)	20.60 (523.24)
UCN 6-20	6.54 (166.11)	7.80 (198.12)	20.00 (508.00)	22.91 (581.91)	30.25 (768.35)
UCN 6-30	6.54 (166.11)	7.80 (198.12)	30.00 (762.00)	32.80 (833.12)	40.16 (1020.06)
UCN 8-20	8.11 (205.99)	9.61 (244.09)	20.00 (508.00)	22.91 (581.91)	30.25 (768.35)
UCN 8-24	8.11 (205.99)	9.61 (244.09)	24.00 (609.60)	27.30 (693.42)	34.70 (881.38)
UCN 8-30	8.11 (205.99)	9.61 (244.09)	30.00 (762.00)	32.80 (833.12)	40.16 (1020.06)
UCN 10-20	10.48 (266.19)	12.05 (306.07)	20.00 (508.00)	22.91 (581.91)	30.25 (768.35)
UCN 10-30	10.48 (266.19)	12.05 (306.07)	30.00 (762.00)	32.80 (833.12)	40.16 (1020.06)
UCN 10-40	10.48 (266.19)	12.05 (306.07)	40.00 (1016.00)	42.72 (1085.08)	50.16 (1274.06)

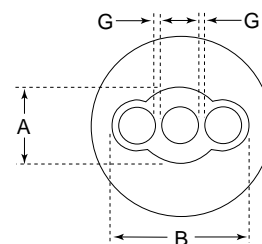
UCN 5
5-in Two-Piece End Cap



UCN 6/10
6-in & 10-in Two-Piece End Cap



UCN 8
8-in Two-Piece End Cap



ZA-1288

Two-Piece End Cap Capabilities

End Cap Type	End Cap Dimensions			Maximum Cable Entry Combinations ¹			
	A in (mm)	B in (mm)	G in (mm)	One ² in (mm)	Two ³ in (mm)	Three ³ in (mm)	Four ³ in (mm)
UCN 5	1.8 (46)	2.1 (53)	0.4 (10)	1.7 (43)	1.5 (38)	—	—
UCN 6	2.5 (64)	4.2 (105)	0.4 (10)	2.4 (61)	3.5 (90)	3.0 (77)	2.5 (64)
UCN 8	3.9 (100)	5.7 (145)	0.4 (10)	3.8 (97)	5.1 (129)	4.6 (117)	4.1 (104)
UCN 10	4.1 (104)	8.1 (205)	0.4 (10)	4.0 (101)	7.4 (190)	7.0 (177)	6.5 (164)

¹ These dimensions indicate the maximum combined cable diameters that can be accommodated in each two-piece end cap.

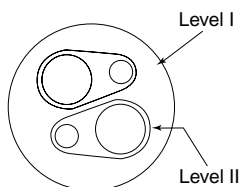
² Maximum cable diameter possible in center of end cap.

³ Always allow 0.4 in (10 mm) space between cables. This space is allowed for in the above chart.

Ordering Information *(continued)*

UCNT-8 / UCNT-10

8-in & 10-in Three-Piece End Cap



ZA-1289

Three-Piece End Cap Capabilities

End Cap Type	Maximum Cable Entry Combinations ¹ Cutting Level I*				Cutting Level II*			
	One ² in (mm)	Two ³ in (mm)	Three ³ in (mm)	Four ³ in (mm)	One ² in (mm)	Two ³ in (mm)	Three ³ in (mm)	Four ³ in (mm)
UCNT-8	2.6 (66)	3.7 (95)	3.4 (85)	2.9 (75)	2.0 (52)	3.2 (81)	3.2 (82)	2.9 (75)
UCNT-10	3.8 (97)	5.0 (128)	5.1 (130)	4.7 (120)	3.0 (77)	4.2 (106)	4.6 (117)	4.7 (120)

¹ These dimensions indicate the maximum combined cable diameters that can be accommodated in each three-piece end cap.

² Maximum cable diameter possible per cutting level.

³ Always allow 0.4 in (10 mm) space between cables. This space is allowed for in the above chart.

* Maximum individual cable diameter differs in each of the two cutting levels in three-piece end caps.

UCN/UCNFR BEC Selection Guide (Capacity in Pairs and AWG)

Note: Add "-FR" to part number to select flame-retardant version.

UCN Part Number	Modular Splice 25 Pair						Single Splice (Tel-Splice or Equivalent Connector) or Modified Fold Back			PICABOND Connector		
	In Line 28-26	24	22	Fold Back 28-26	24	22	28-26	24	22	In Line 28-26	24	22
UCN 5-20	700	600	300	400	325	275	600	500	300	700	600	300
UCN 6-10	800	800	600	600	500	400	700	600	600	800	800	600
UCN 6-20	1200	1200	600	900	800	600	1200	1000	600	1200	1200	600
UCN 6-30	1800	1500	900	1200	1000	800	1500	1500	900	1800	1800	900
UCN 8-20	2400	2100	1200	1500	1200	1000	2100	1800	1200	2400	2100	1200
UCN 8-24	2400	2100	1200	1500	1200	1000	2400	2100	1500	2600	2300	1500
UCN 8-30	3300	2800	2000	2400	1800	1200	3000	2400	1800	3300	2800	2000
UCN 10-20	3200	2700	1800	2100	1800	1200	3000	2400	1500	3200	2700	1800
UCN 10-30	4800	4000	2700	3000	2300	2000	4400	3000	1800	4800	4000	2700
UCN 10-40	6000	5200	3200	4200	3300	2700	5600	4000	2000	6000	5200	3200

Closure Encapsulant Capacities*

Part Number	Grams	Part Number	Grams
UCN 5-20	1617	UCN 8-24	6107
UCN 6-10	1910	UCN 8-30	7335
UCN 6-20	3324	UCN 10-20	8536
UCN 6-30	5234	UCN 10-30	12223
UCN 8-20	5122	UCN 10-40	15702

* Encapsulant Capacities - Reflects the amount of encapsulant required if the splice were to occupy 75% of the internal volume of the UCN. Smaller splices will require more encapsulant. Larger splices will require less encapsulant.

Accessories (The following accessories should be ordered according to package size.)

Closure Type	Part Number	Package Size
O-Rings:		
UCN 5	UCN5-KT-SRC	10
UCN 6	UCN6-KT-SRC	10
UCN 8	UCN8-KT-SRC	10
UCN 10	UCN10-KT-SRC	10
Cover Gasket:		
UCN 6-10	UCN-KT-SL10	5
UCN 5/6/8/10-20	UCN-KT-SL20	5
UCN 8-24	UCN-KT-SL24	5
UCN 6/8/10-30	UCN-KT-SL30	5
UCN 10-40	UCN-KT-SL40	5
2-Piece End Cap with O-Ring:		
UCN 5	UCN5-EC2	1
UCN 6	UCN6-EC2	1
UCN 8	UCN8-EC2	1
UCN 10	UCN10-EC2	1

Closure Type	Part Number	Package Size
3-Piece End Cap with O-Ring:		
UCN 8	UCNT8-EC3	1
UCN 10	UCNT10-EC3	1
Clamping Bars:		
UCN 6-10	UCN6-10-CB	1
UCN 5/6/8/10-20	UCN6-20-CB	1
UCN 8-24	UCN8-24-CB	1
UCN 6/8/10-30	UCN8-30-CB	1
UCN 10-40	UCN10-40-CB	1
Miscellaneous Parts:		
Installation Block	UCN-INST-BL	1
Cleaning Cloth	UCN-KT-CT	100
Sealing Paste	UCN-KT-SP	10
Sealing Tape	UCN-KT-TP	5
Lubricant and Brush	UCN-KT-LB	10
Pincers	UCN-KT-STP	1
Spare Blade	UCN-CT-SB	1
T-Handle Tool	UCN-KT-IT-TH	1
Aerial Hanging Device	UCN-AHD	1

CUT LINE

UCN Cutting Tool (UCN-CT-1)



UCN Tool Kit (SCT-001-UCN)



Photo
SHD07
SHD08

UCN Tool Kit (SCT-001-UCN)

The UCN Tool Kit contains:
Cutting tool, extra blade, T-head wrench, installation block, tool mounting bracket, and carrying case.

Note: Contact your Corning Cable Systems Sales or Customer Service Representative for availability.